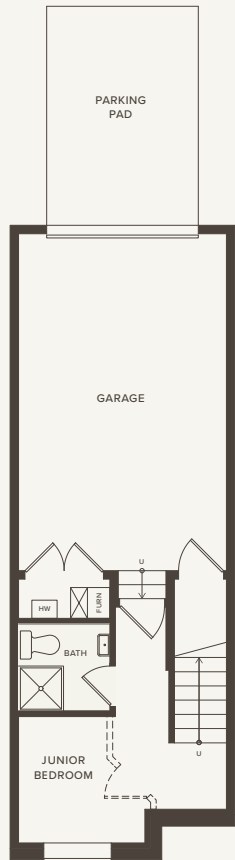
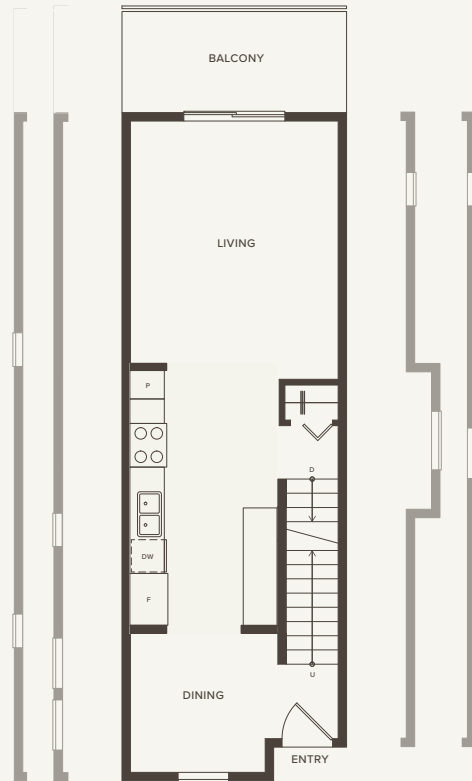




1249-1299 SQFT



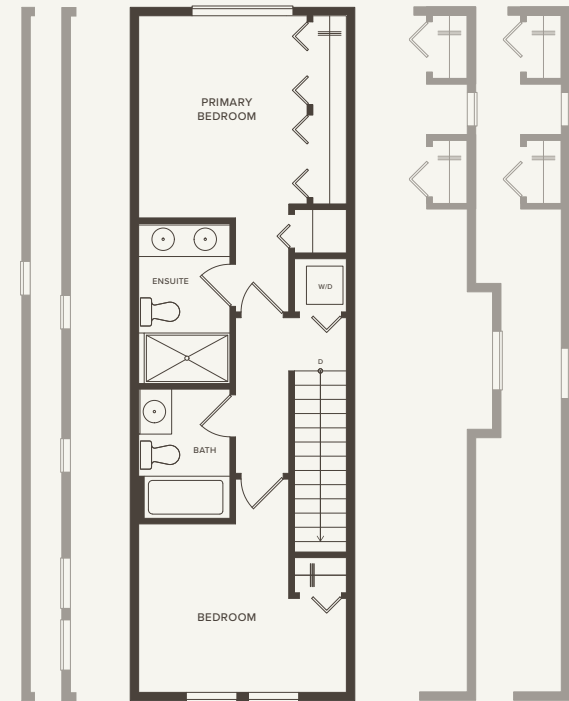
LOWER



MAIN



C7 C9



UPPER



C11 C6



C7 C9

The developer reserves the right to make modifications and changes to the building design, elevations, dimensions, specifications, features and prices without prior notification. Decks, patios, stairs and windows may vary based on site conditions. All sizes and dimensions are approximate and based on architectural measurements. Reverse and/or mirror plans occur throughout the development. Architectural plans may vary please refer to a sales representative for further details. Please see disclosure statement for specific offering once available. E. & O.E. Sales and Marketing by Fifth Avenue Real Estate Marketing Ltd. fifthave.ca 604-583-2212

1257-1300 SQFT



The developer reserves the right to make modifications and changes to the building design, elevations, dimensions, specifications, features and prices without prior notification. Decks, patios, stairs and windows may vary based on site conditions. All sizes and dimensions are approximate and based on architectural measurements. Reverse and/or mirror plans occur throughout the development. Please see disclosure statement for specific offering once available. E. & O.E. Sales and Marketing by Fifth Avenue Real Estate Marketing Ltd. fifthave.ca 604-583-2212

1522-1587 SQFT

A13 is a 5-piece ensuite bathroom with different configuration.
See sales for details.



LOWER

MAIN

UPPER

The developer reserves the right to make modifications and changes to the building design, elevations, dimensions, specifications, features and prices without prior notification. Decks, patios, stairs and windows may vary based on site conditions. All sizes and dimensions are approximate and based on architectural measurements. Reverse and/or mirror plans occur throughout the development. Please see disclosure statement for specific offering once available. E. & O.E. Sales and Marketing by Fifth Avenue Real Estate Marketing Ltd. fifthave.ca 604-583-2212